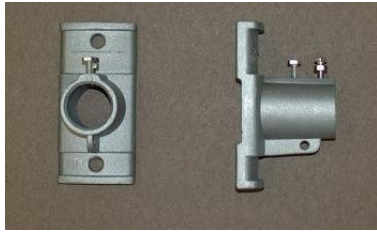


# Streetview Twin Banner Bracket System

Each Streetview Twin system includes the following:

- Two cast aluminum brackets with two tightening screws & one eyellet to secure the banner to



- Two fiberglass arms, 1.25" in diameter, reinforced with aluminum sleeves



- Four steel bands and two zip ties



## Installation Instructions:

### Step 1: Determine Installation Height

- The distance between the lower edge of the upper cast aluminum bracket and the upper edge of the lower aluminum bracket should be equal to banner height minus 4"

### Step 2: Install Upper Banner Arm

- Install upper bracket using supplied steel bands
- Install upper banner arm by sliding aluminum reinforced section into bracket
- Tighten screws on bracket to make sure the banner arm is secured

### Step 3: Install Banner

- Slide banner pocket over top banner arm
- Secure banner on banner arm by running zip tie through the upper banner grommet and the eyellet on the bracket. Tie the zip tie and cut off the unused section.
- Insert lower banner arm into banner's bottom bracket

### Step 4: Install Lower Banner Arm

- Install lower bracket using supplied steel bands at proper height per Step 1.
- Install lower banner arm by sliding reinforced aluminum section into bracket
- Tighten screws on bracket to make sure the banner arm is secured